

 Fabbian



FABBIAN DECORATIVE
D81 CRIO



Company overview.

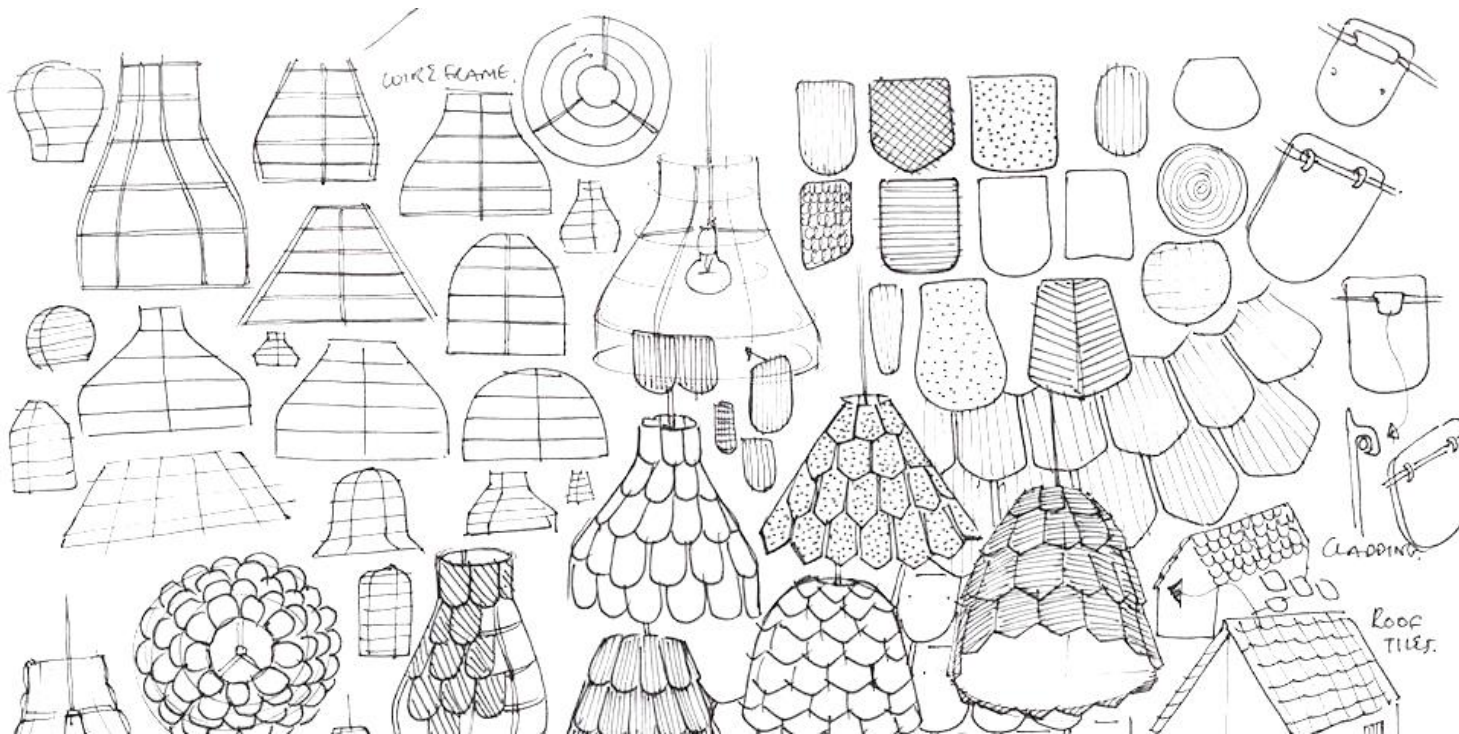
Established in 1961 in the Venetian countryside, Fabbian is one of the premier Italian lighting manufacturers operating in the modern design market, designing and manufacturing lighting fixtures for residential and commercial markets.

This history, combined with traditional Italian craftsmanship and the finest quality, keeps Fabbian a prominent brand that is internationally recognized in the architectural and design communities worldwide.

Company overview.

The endless research on new materials, trends, and aesthetics has always been combined with market demands and new business opportunities.

From the very beginning to the design application, the product life cycle is strictly controlled to make sure that each light fixture meets the highest quality expectations and safety requirements.



These components give Fabbian products a vast and diversified array of inspirations and styles, which is also ensured by yearly prestigious collaborations with well-renowned and emerging designers.



North America.

With over 20 years in North America, Fabbian USA offices are located in the world's capital of design, **New York City**, just blocks from Time Square.

COMPANY PROFILE

Company structure.

Proudly headquartered in Castelmino di Resana, in the **Venetian Countryside**, the company has an international outreach.

From **Venice**, it manages directly the European region, while it distributes the products through agents or importers in the other macro-geographical areas (Greater China, Russia, South and East Asia, South America, GCC countries, Northern Africa).



Designers.

Fabbian has collaborated with some of the most prestigious designers throughout the world to create unique elements for your home and business.



A. SAGGIA &
V. SOMMELLA



AFRA E TOSIA
SCARPA



ALBERTO APOSTOLI



ALBERTO TORSELLO



FORMFJORD



FRANCESCO
LUCCHESI



GIAMPIERO DERAÏ



GIAN PAOLO CANOVA



MATALI CRASSET



MATHIEU
LEHANNEUR



NICOLA DESIGN



NICOLA GARDIN-
ROGER ZANON



ALESSANDRA
BALDERESCHI



ALI SIAHVOSHI



BARTEK MEJOR



BENJAMIN HUBERT



GIGI ROSSI



GIO MINELLI



GUILLAUME
DELVIGNE



J. DELLA FONTANA
DZU



PAMIO DESIGN



PAOLO DE LUCCHI



PELLEGRINI+MENGATO
DESIGN



PIOTITO TOSO



BRIDGEWELL
CONSULTING LTD



CONSTANCE GUISSSET



D. BUSATO &
G. CICCARESE



DESIGNZAGATO



KARIM RASHID



LAGRANJA DESIGN



LORENZO TRUANI



LUCA SCACCHETTI



PROSPERO RASULO



RENATO MONTAGNER



STUDIO FUTURA



TIZIANO MAFFIONE



DOMPIERE & PISONI



FE DESIGN



FEDERICA BUSANI



FLYNN TALBOT



LUCIE KOLDOVA



MARC SADLER



MARY PAVIN



MASSIMO & MARZIA
SACCONI



VIM & VIGOR



VITTORIO MASSIMO

Trade Shows & Events.

Fabbian takes part in the world's most relevant trade show dedicated to light, EUROLUCE, in Milan, every two years, with a massive booth to showcase new collections and best seller products. Other important dates in the Fabbian's calendar are Stockholm Furniture & Light Fair, WantedDesign Manhattan, and Sleep London.



FABBIAN BREADTH OF LINE 2019

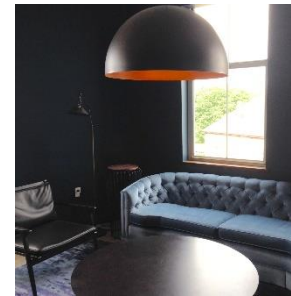
FABBIAN CUSTOM



Customizable &
Unique Art & Large
scale products

Client Specific
Custom Fixture
Development

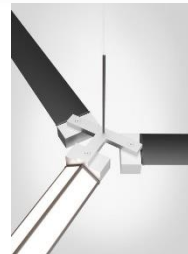
FABBIAN DECORATIVE



Both Glass and Non-
Glass Feature
Elements.

Varying Styles,
uniquely Italian for
the specified project

FABBIAN TECH



Italian Architectural
Downlights, Linear, &
Systems

D81 CRIO

Crio D81, designed by Giovanni Minelli, is a versatile pendant family which quickly established itself as a **new classic for today's interiors**.

Crio are offered in 3 sizes (**2', 4' and 6' Diameters**) and choice of 2 standard finishes in metal and wood.

The interior diffuser is a **concave opaline acrylic** and creates a seamless, evenly diffused dome of light.



D81 CRIO



Crio provides functional illumination for task areas, public, hospitality and residential spaces as well as adds architectural interest and definition to large open areas.

Loved by Architects and Interior Designers thanks to the **unique geodesic architectural design** and backlit domed interior, Crio has been installed in numerous commercial office, hospitality, residential, and retail spaces throughout the US and Canada.

**Private
Office**

*Boston,
MA*

**Fantoni
Showroom**

**Porto
Mantovano (VR)**

*Paolo Cortivo
Ambostudio*





Product Lineup

D81 CRIO - From the Fabbian factory

Crio's foundation is its
hand-made multi-faceted
aluminum structure.



D81 CRIO - The Details

Crio's diffuser is made of opaline PMMA (polymethyl-methacrylate). It is a seamless piece of acrylic that conceals the light sources and provides an evenly diffused glowing dome. The dome is held in place with acrylic screws that are nearly invisible, preserving the seamless appearance.



D81 CRIO - The Details

The light sources are placed at the top of the dome in an evenly spaced pattern – this maximizes the light diffusion and minimizes hot spots – creating the **seamless dome of light**.

Crio is offered in integral LED or E26 Medium based socket versions. Medium based sockets allow for the use of incandescent and LED or CFL retrofit lamps.



D81 CR10 - The Details

LED modules are high efficacy down-light modules with the latest LED technology from Samsung, offering the best color consistency as derived from Samsung's extensive binning expertise.

LED modules are 0-10V dimmable – allowing the fixtures to be suitable for both residential and commercial use. 3000K, Universal Input (120-277), 0-10V dimmable LED source. Using Hatch Lighting 96W 0-10V Universal Drivers.





**Dada Architecture
+ Design**

Crans-Montana,
Switzerland

*Davide d'Agostino
Architecture*

D81 Crio

Photo by Alessandro Astegiano

D81 CRIO-Models

22"

Lamp Type:

- E26: 5 X 18W E26 120V Incandescent, LED or CFL
- LED: 3 X 17.5W 120V 3000K 6150 Lumens CRI>80, Universal Input (120-277)

Dimmable:

- E26: Triac (Depending on selected light source)
- LED: 1/10V

Dimensions: 22.5" Dia X 9.6"H; 196" max height
6.6" Dia Canopy

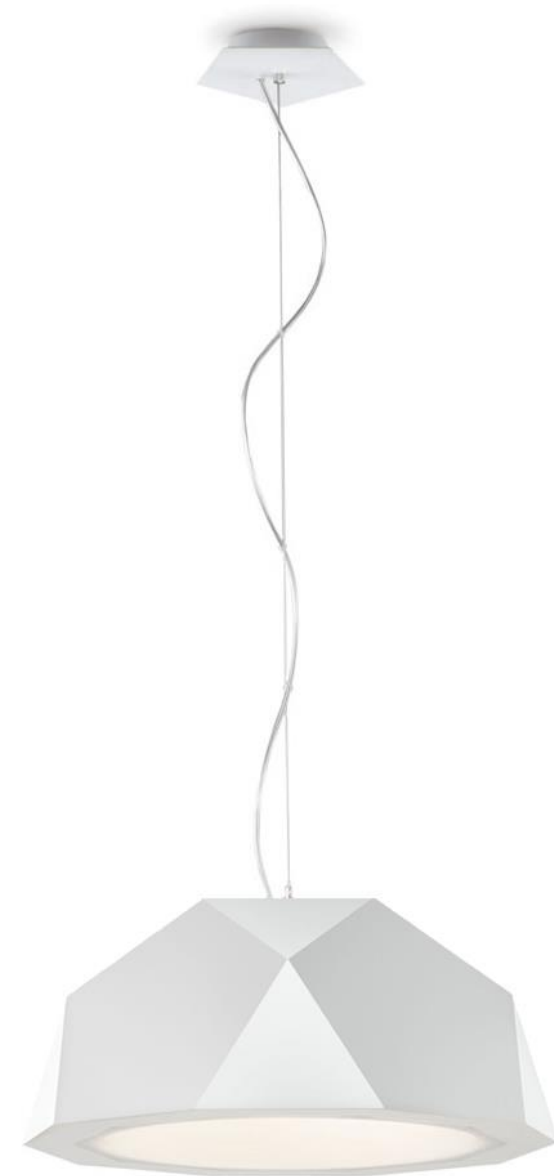
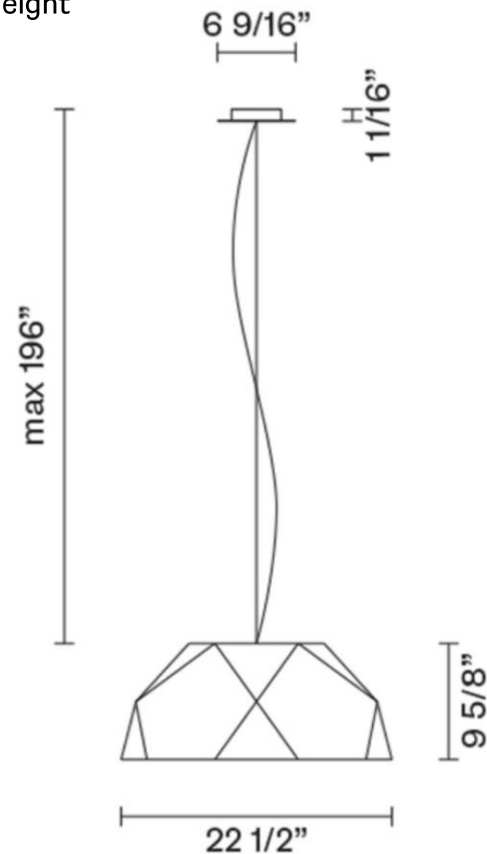
Model Numbers:

Incandescent - E26:

D81 A01A 01- White
D81 A01A 48- Dark Wood

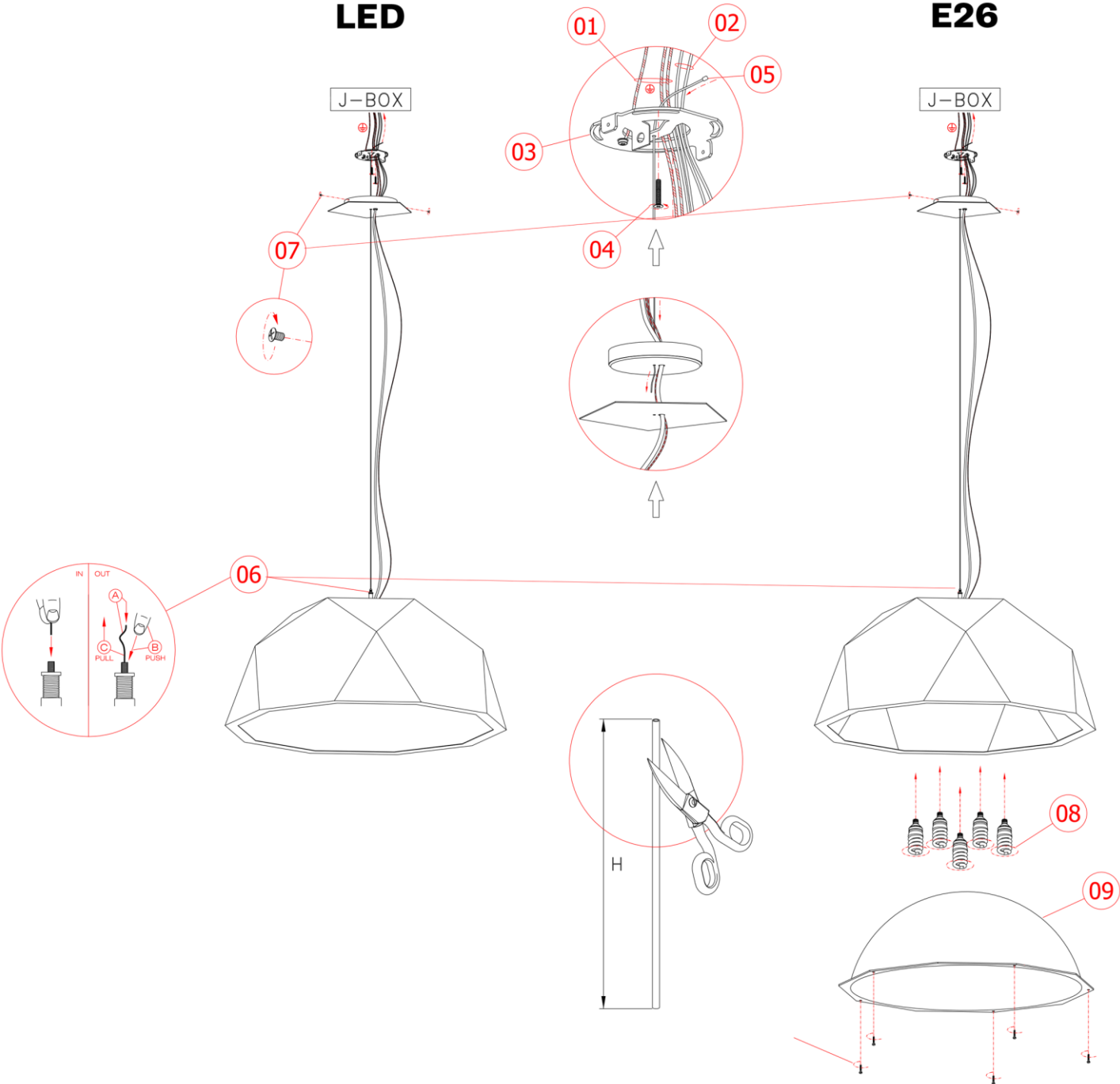
LED:

D81 A09A 01- White
D81 A09A 48- Dark Wood



D81 CRIO-Models

22" Installation Details



D81 CRIO-Models

45"

Lamp Type:

- E26: 10 X 23W E26 120V Incandescent, LED or CFL
- LED: 5 X 27.8W 120V 3000K 16650 Lumens CRI>80, Universal Input (120-277)

Dimmable:

- E26: Triac (Depending on selected light source)
- LED: 1/10V

Dimensions: 45.25" Dia X 19.25"H; 196" max height

9.3" Dia Canopy

Model Numbers:

Incandescent – E26:

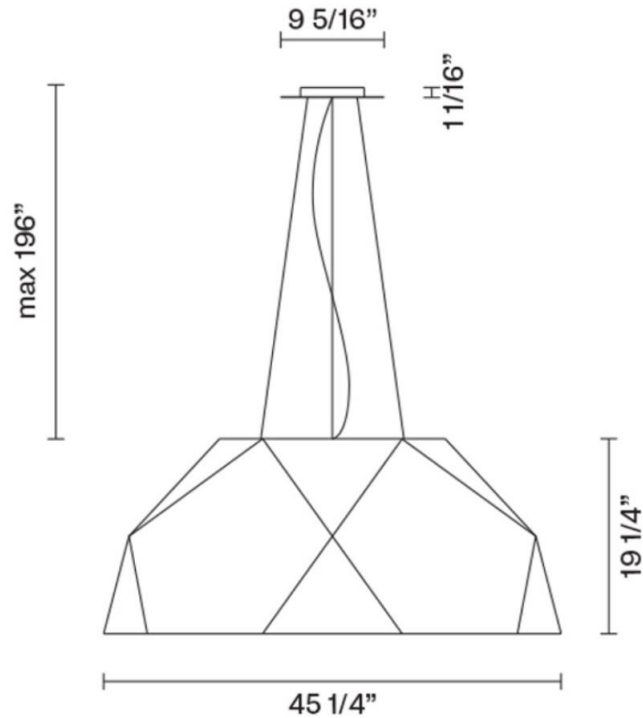
D81 A03A 01- White

D81 A03A 48- Dark Wood

LED:

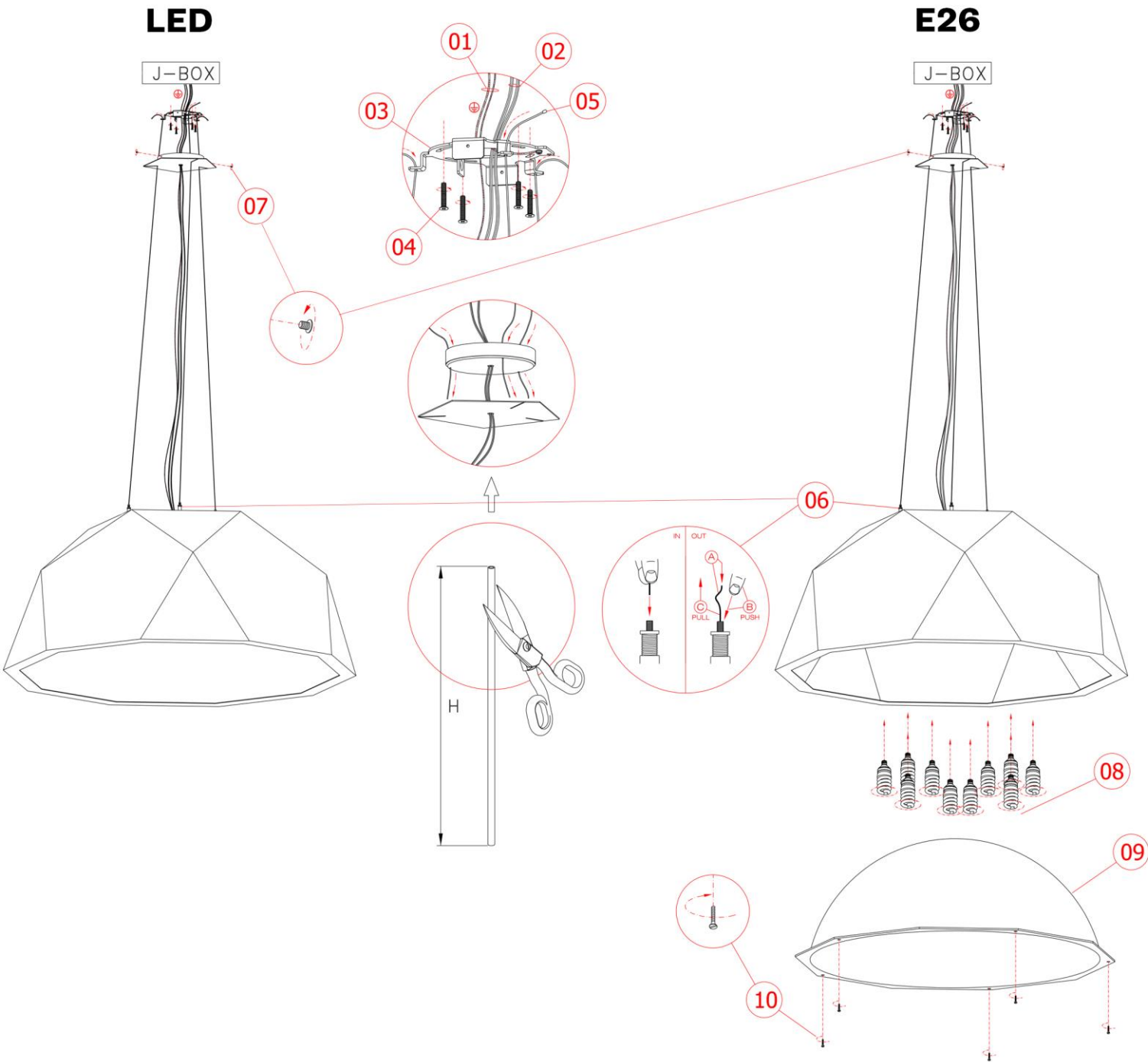
D81 A13A 01- White

D81 A13A 48- Dark Wood



D81 CRIO-Models

45" Installation Details



D81 CRIO-Models

70"

Lamp Type:

- LED: 6 X 27.8W 120V 3000K 19980 Lumens CRI>80, Universal Input (120-277)

Dimmable:

- LED: 1/10V

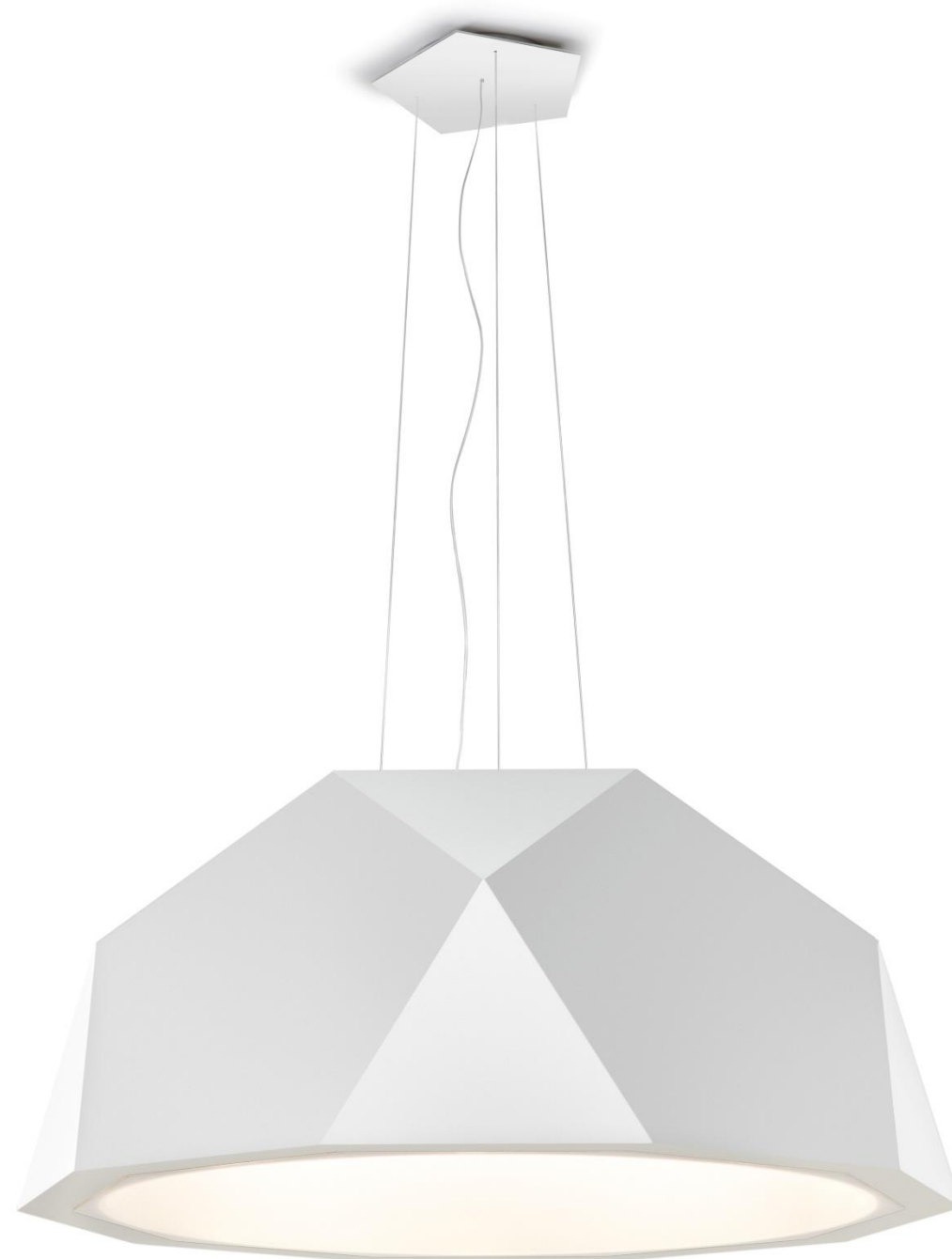
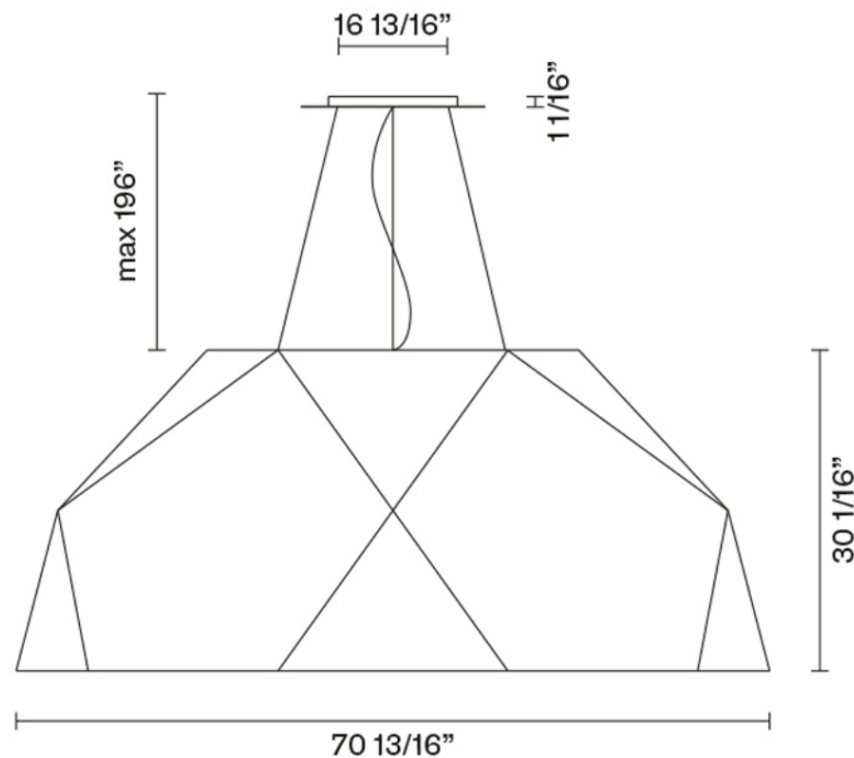
Dimensions: 70.8" Dia X 30.1"H; 196" max height; 160 lbs
16.8" Dia Canopy

Model Numbers:

LED:

D81 A17A 01 - White

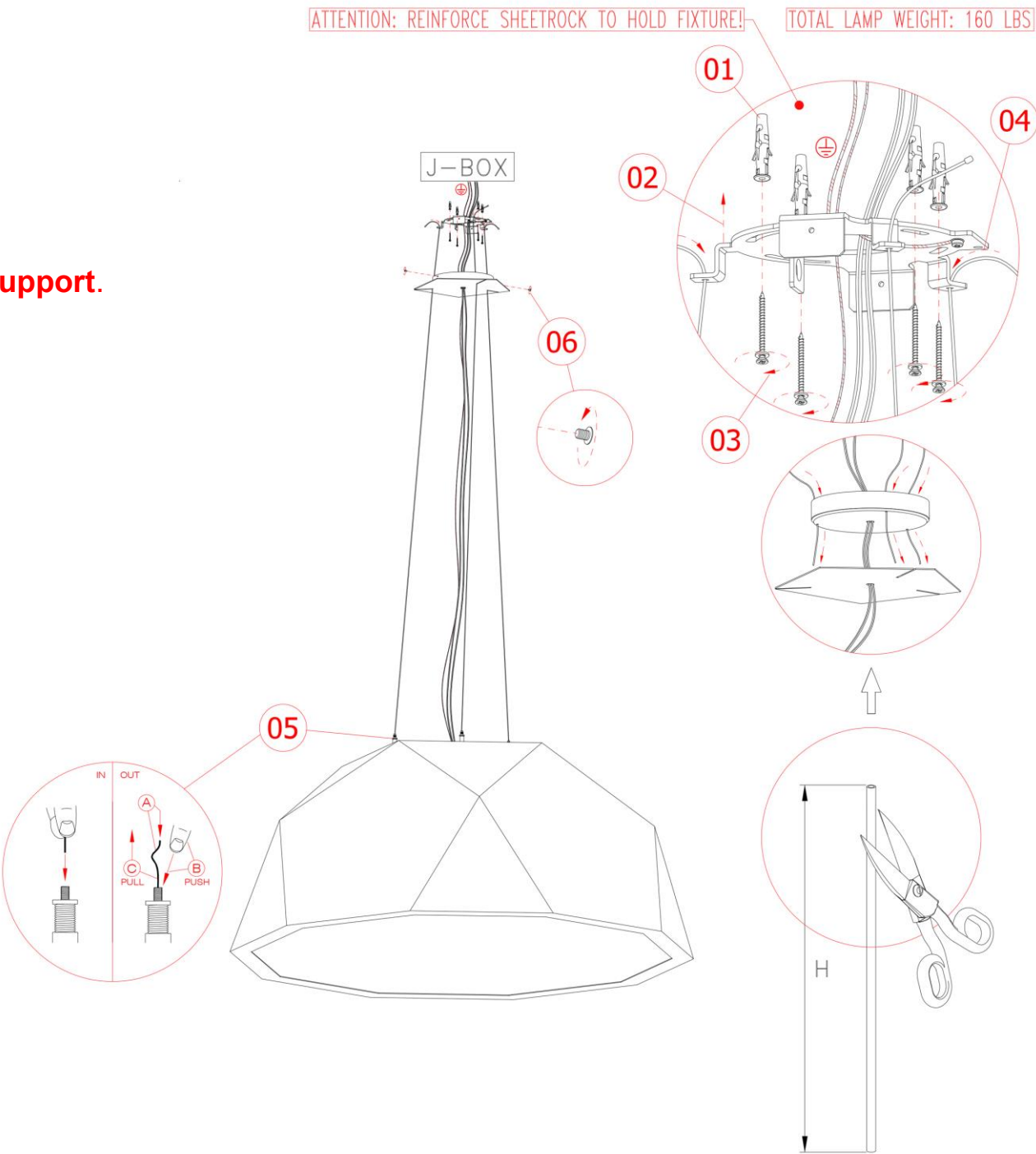
D81 A17A 48 - Dark Wood



D81 CRIO-Models

70" Installation Details

70" Crio weighs 160 pounds and requires structural support.



D81 CRIO-Finishes

Standard Finishes

Crio is offered in two standard finishes: white RAL9010 painted or dark wood veneer. Wood veneers are products of Alpi Wood, natural materials with high performance and ecosustainable qualities.



White RAL9010



RAL 9010
Pure White

A square color swatch showing the RAL 9010 Pure White color. The swatch is a solid, uniform white with a slight gradient, and the text "RAL 9010 Pure White" is printed in a bold, black, sans-serif font.

D81 CRIO-Finishes

Standard Finishes

Crio is offered in two standard finishes: white RAL9010 painted or dark wood veneer. Wood veneers are products of Alpi Wood, natural materials with high performance and ecosustainable qualities.



Makassar Ebony



D81 CRIO-Finishes

Custom Options

- Crio is offered in two standard finishes but can also be ordered in custom RAL or Pantone colors.



Choose any RAL Color to match your project.

Custom black Crio with red trim





**Canadian National Training
Excellence Center**

Homewood, IL

Garnett Architects

D81 Crio

Photo by James John Jetel Studio





Conde' Nast Headquarters -
One World Trade Center

-
New York, NY

Gensler NY

D81 Crio

Photo by Garrett Rowland





FedEx HQs

Dallas, Texas

HOK

D81 Crio

*Photo by
Michael Robinson*



Newmark Grubb
Knight Frank

NELSON | Visnick &
Caulfield Associates

D81 Crio

Photo by:
Neil Alexander/
Peter Vanderwarker



Newmark Grubb
Knight Frank

NELSON | Visnick &
Caulfield Associates

D81 Crio

Photo by:
Neil Alexander/
Peter Vanderwarker

Restaurant



D81 Crio

Fabbian USA
Headquarters

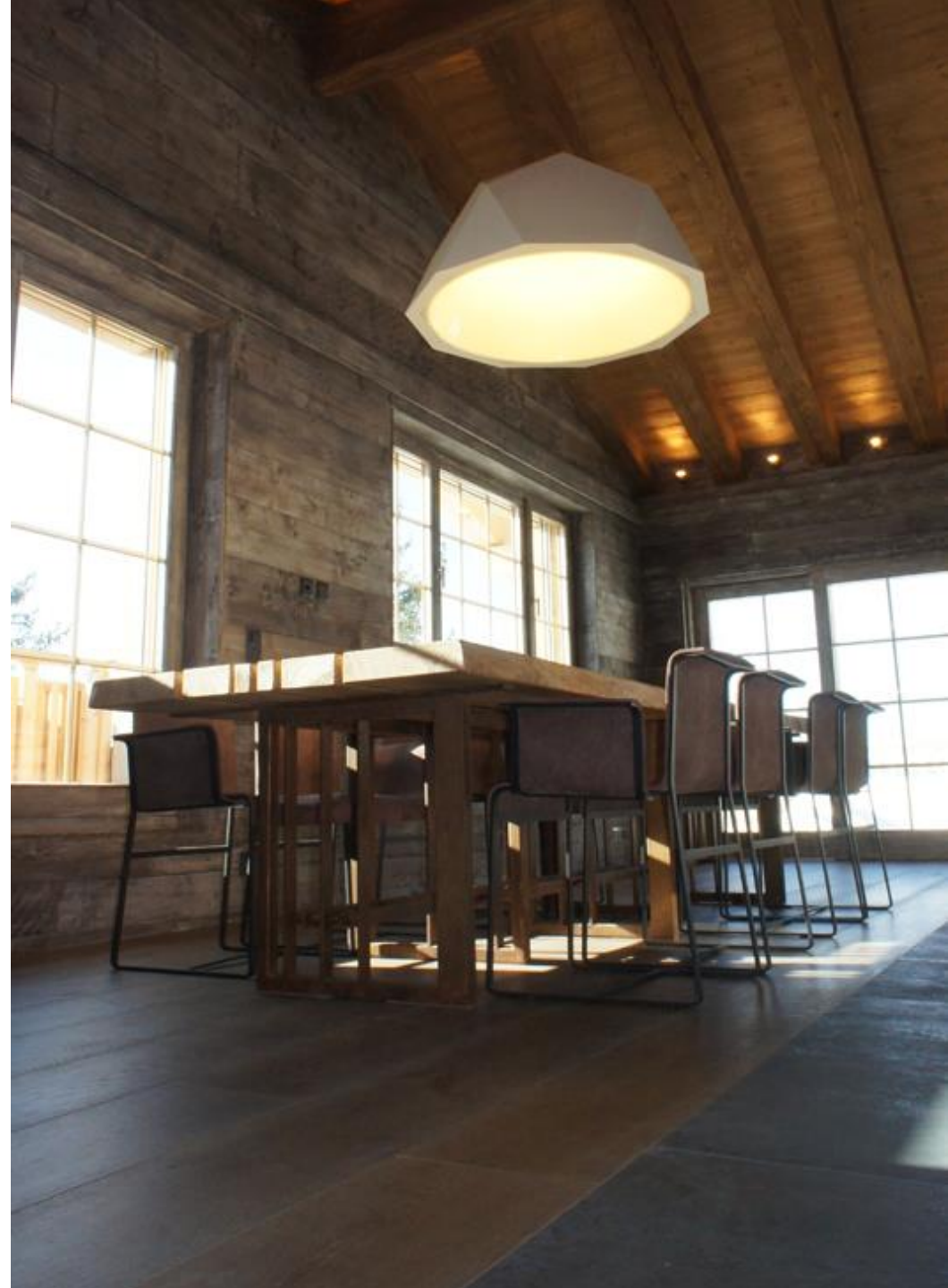
New York
City

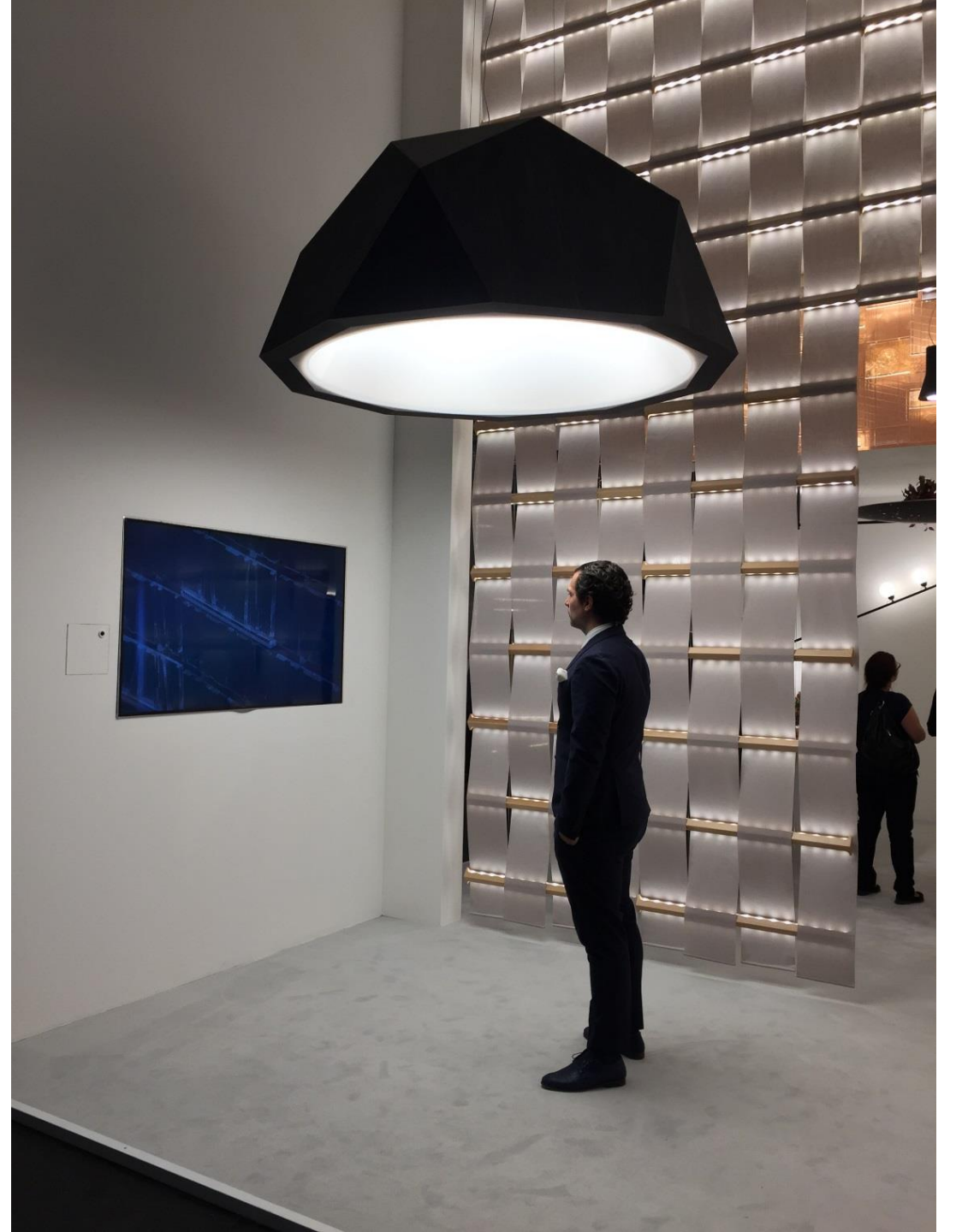


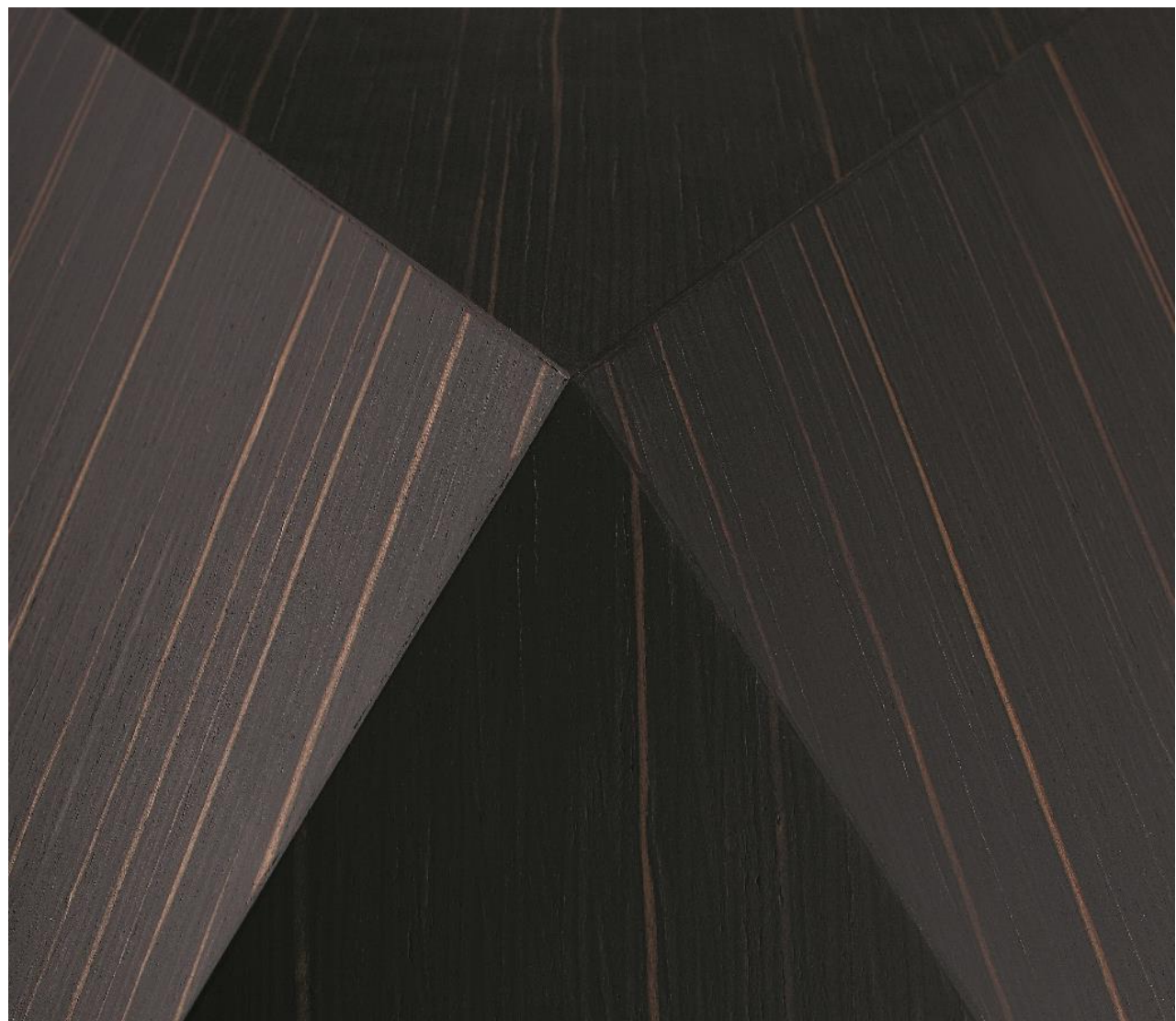


Wood Lodge
over Dining
Table

D81 Crio







Revised 2/25/21

 **Fabbian**

For more information contact:

Fabbian USA

www.fabbian.us

307 W38th St. Ste 1103

New York, NY 10018 USA

sales@fabbian.com